

LAW

ESTATE WINES

*“Celebrate the fearless gambles you take and
proudly toast what you love most.”*

Don & Susie Law





THE STORY OF LAW

WHY ARE WE 'HERE'? ONE, we have long had a passion for Rhone inspired blends. Two, Paso Robles is 'America's Rhone'. Those parts were easy. Our mantra was to find a vineyard site that could produce ultra-premium, limited production, Rhone and Priorat style wines that would be a true expression of the site. After two years of evaluating many potential sites (almost to exasperation), we finally found our Holy Grail. The analysis of 42 soil pits on this site revealed coveted limestone with low vigor soils. This, combined with the high elevation and steep slopes, was the unique and remarkable property that would produce the premium fruit we desired. Critical to our goal is a winery that can manifest the quality of the terrific fruit and create a world-class wine. We also believe that the Tasting Room should be an environment much like your home living room, where you can relax with friends and family while enjoying our Law Estate wines. As we continue to showcase and share the best that our estate has to offer, we will always be honored to have you joining us in the adventure.

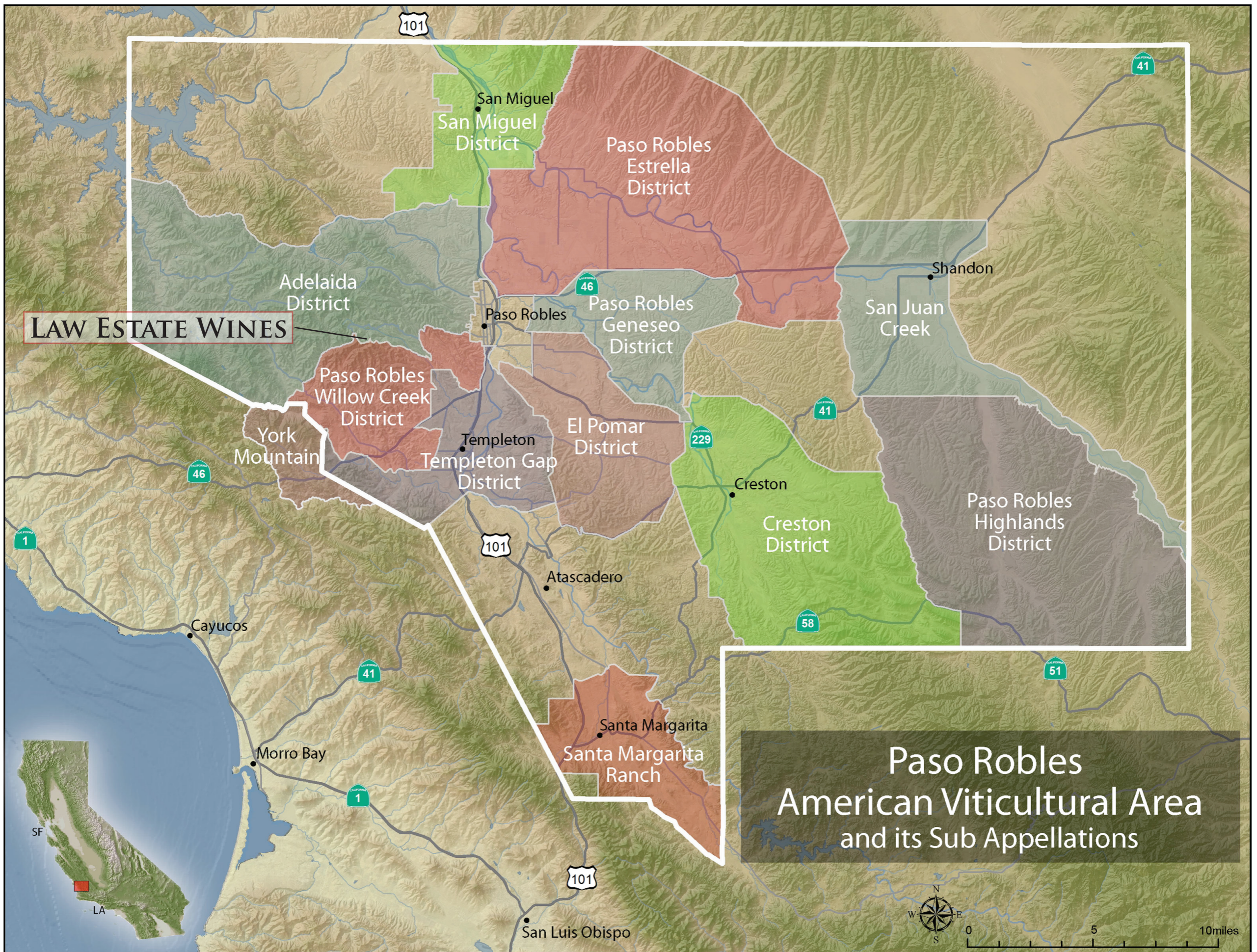
Don and Susie Law, Proprietors

LAW VINEYARD

WE ARE COMMITTED TO MAKING exceptional wines through sustainable and organic farming practices with minimal inputs. Located above Peachy Canyon Road on the west side of Paso Robles, the vineyard is one of the highest in the area. It is planted in high density, small-lot blocks at elevations between 1,600 and 1,900 feet. The extreme slopes, limestone soils, and multiple aspects create the distinct canvas and palette from which we work.

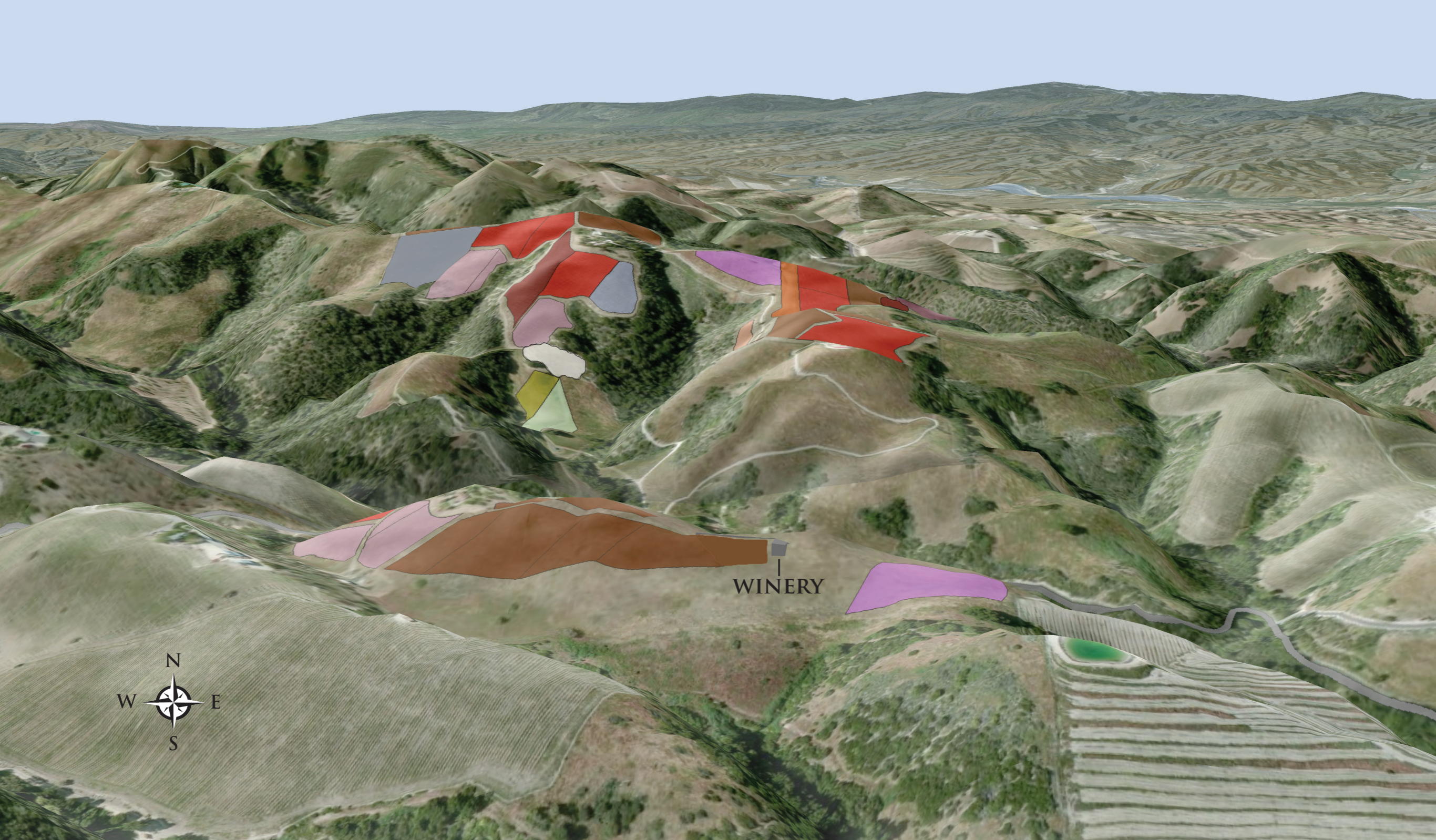
AT 57 TOTAL ACRES PLANTED, multiple clones of Grenache and Syrah account for 61% of the vineyard acreage. Accompanying that are Cabernet Sauvignon, Mourvèdre, Carignan, Petite Sirah, Petit Verdot, and Tempranillo. The vast majority of our vines were planted in 2008. Our most recent plantings in 2013 include Clairette Blanche, Marsanne, and Roussanne, as well as a Syrah, Viognier, Roussanne field blend.





LAW ESTATE WINES

Paso Robles American Viticultural Area and its Sub Appellations



LAW VINEYARD

VARIETIES - 59.7AC

CABERNET SAUVIGNON - 4.81AC
CARIGNAN - 3.78AC
CLAIRETTE BLANCHE - 0.74AC

GRENACHE - 17.39AC
MARSANNE - 0.74AC
MOURVEDRE - 6.46AC

PETITE SIRAH - 0.49AC
PETIT VERDOT - 2.79AC
ROUSSANNE - 1.58AC

SYRAH - 17.24AC
SYR, ROUS, VIOG - 1.58AC
TEMPRANILLO - 2.10AC

TASTING NOTES

by LAW

“These latest releases from Law Estate Wines, which are made by the incredibly talented Scott Hawley, are jaw dropping good, and easily the greatest wines to come from this new estate. The future looks very bright indeed.”
- Jeb Dunnuck, Wine Advocate, August 2016

AUDACIOUS 2013 – WA 95

39% Grenache, 36% Syrah, 25% Cabernet Sauvignon

“The 2013 Audacious is a total head turner that’s made from 39% Grenache, 36% Syrah and 25% Cabernet Sauvignon and is all from the limestone soils of the Law Family Vineyard located high up off of Peachy Canyon Road. Fermented in concrete tanks and aged 20 months in 228- and 500-liter French oak barrels, this beauty is locked and loaded with notions of kirsch liqueur, blackberries, savory herbs and dried earth. Rich, full-bodied, concentrated and sexy, with building tannin, don’t miss this beauty!” - Jeb Dunnuck, Wine Advocate, August 2016

BEGUILING 2013 – WA 97, WS 95

85% Grenache, 15% Syrah

“One of the gems in the vintage is the 2013 Beguiling, which is based largely on Grenache blended with 15% Syrah. Fermented in concrete tanks and aged 19 months in larger French oak puncheons, there’s roughly 700 cases of this blockbuster and it offers incredible notes of kirsch, sandalwood, dried herbs and spices in a full-bodied, gorgeously textured, concentrated, layered package. The tannin shows on the finish, and this beauty deserve 3-4 years of cellaring and will drink nicely through 2028.” -Jeb Dunnuck, Wine Advocate, August 2016

BEYOND CATEGORY 2013

50% Syrah, 20% Cab. Sauv., 15% Grenache, 15% Petite Sirah

“Beyond expectations” is another appropriate term for this wine as with each vintage we have the freedom to show what the Law Vineyard has to offer. The nose is exhilarating with black currants on the pedestal of a gorgeous floral lift. This wine projects a blackberry and cranberry-like freshness accompanied by a slight toast or smoke aroma. Sage, licorice, and baked raspberry are concealed within the complexities of a finish that lingers on the sides of your tongue and a brightness that peaks in one’s cheeks. Possessing a strong and bold tannin structure, this wine will undoubtedly age well over the next 7-10 years.

INTREPID 2013 – WA 96+, WS 93

100% Syrah

“The 2013 Intrepid is 100% Syrah and was raised 20 months in 60% new barrels. It sports a deep ruby color to go with savory, mineral and smoky notes of wild herbs, toasted spice, chocolate and ample dark fruits. It carries its 15.5% alcohol beautifully and is full-bodied, deep, rich and layered, with an awesome texture.” - Jeb Dunnuck, Wine Advocate, August 2016

SAGACIOUS 2013 – WA 94, WS 93

37% Grenache, 34% Mourvèdre, 29% Syrah

“Made from close to equal parts Grenache, Syrah and Mourvedre, the 2013 Sagacious reveals a ruby/purple color as well as classic Paso Robles sweet dark fruits, savory herbs and pepper in a full-bodied, juicy, lively package. Brought up in 30% new French oak, it’s a polished, rich and pedal to the metal beauty to drink over the coming 6-7 years.” - Jeb Dunnuck, Wine Advocate, August 2016

WINEMAKER

SCOTT HAWLEY HAS BEEN A part of the Law Estate Wines project since the original plantings in 2008. He consulted on the varieties and clonal selections that best fit our vineyard site. Significantly, his style of winemaking resonated with Don and Susie Law.

PRIOR TO TEAMING UP WITH the Laws, Scott had been creating highly regarded wines from some of Paso Robles most significant vineyards for over 16 years. Through his experiences domestically and abroad, he has developed a deep appreciation for the philosophy that wine is first an expression of place. Scott believes his role is to simply create an environment throughout the grape growing process where the fruit is given the greatest opportunity to perform to its potential. It is then through blending that he arranges the wines to showcase the best of what the site and the vintage has delivered. From the dirt on his boots to his wine stained hands, it is obvious he loves the process as much as the result and his enthusiasm is present in every wine he makes.

